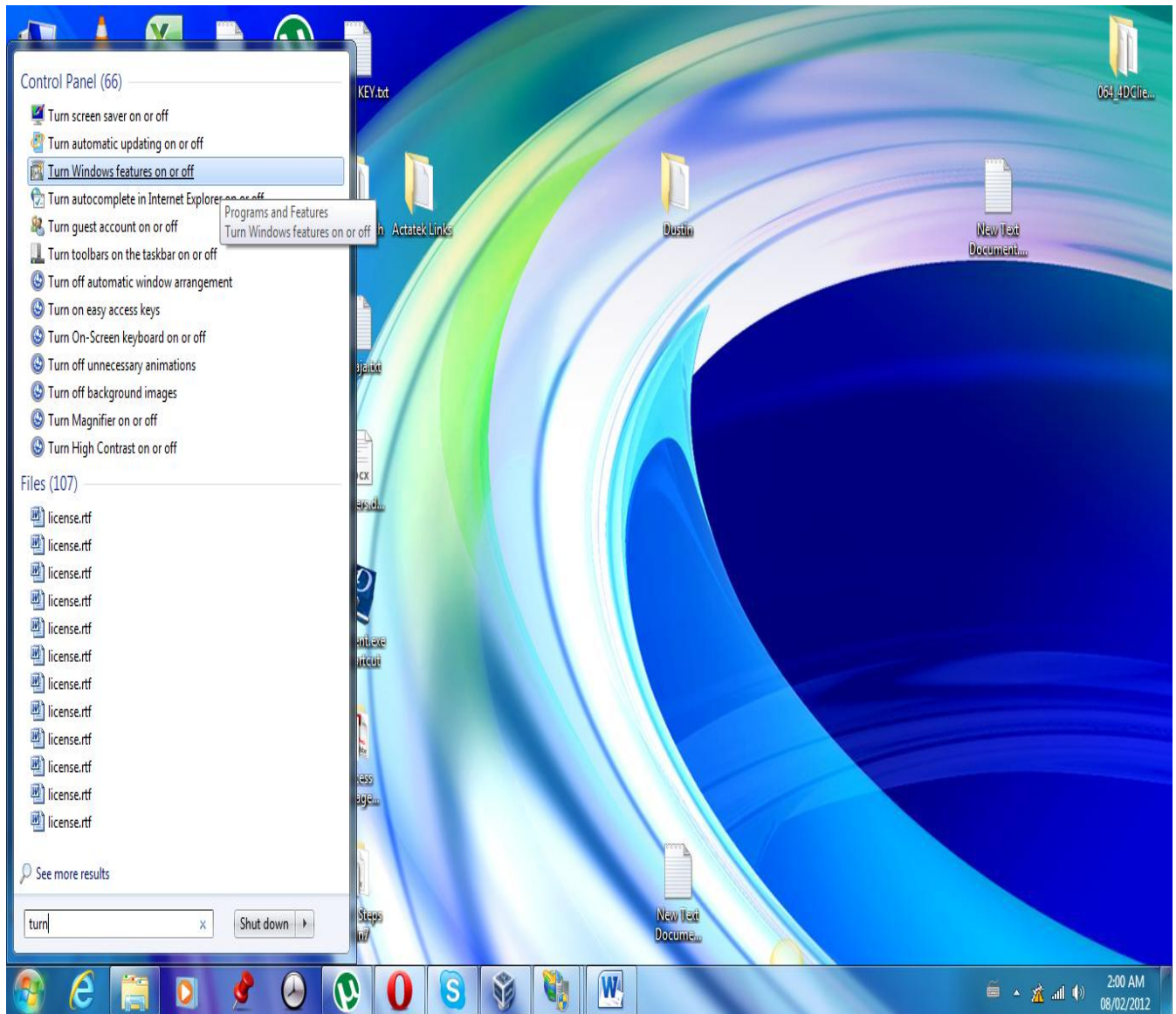


## AMS Installation Primary Steps

### Step1: Open Turn Windows feature on or off



**Step2:**

**Check Internet Information Service**

**Check on all Check boxes of IIS 6 Management Compatibility**

**Check on all Check boxes of World Wide Web Services**

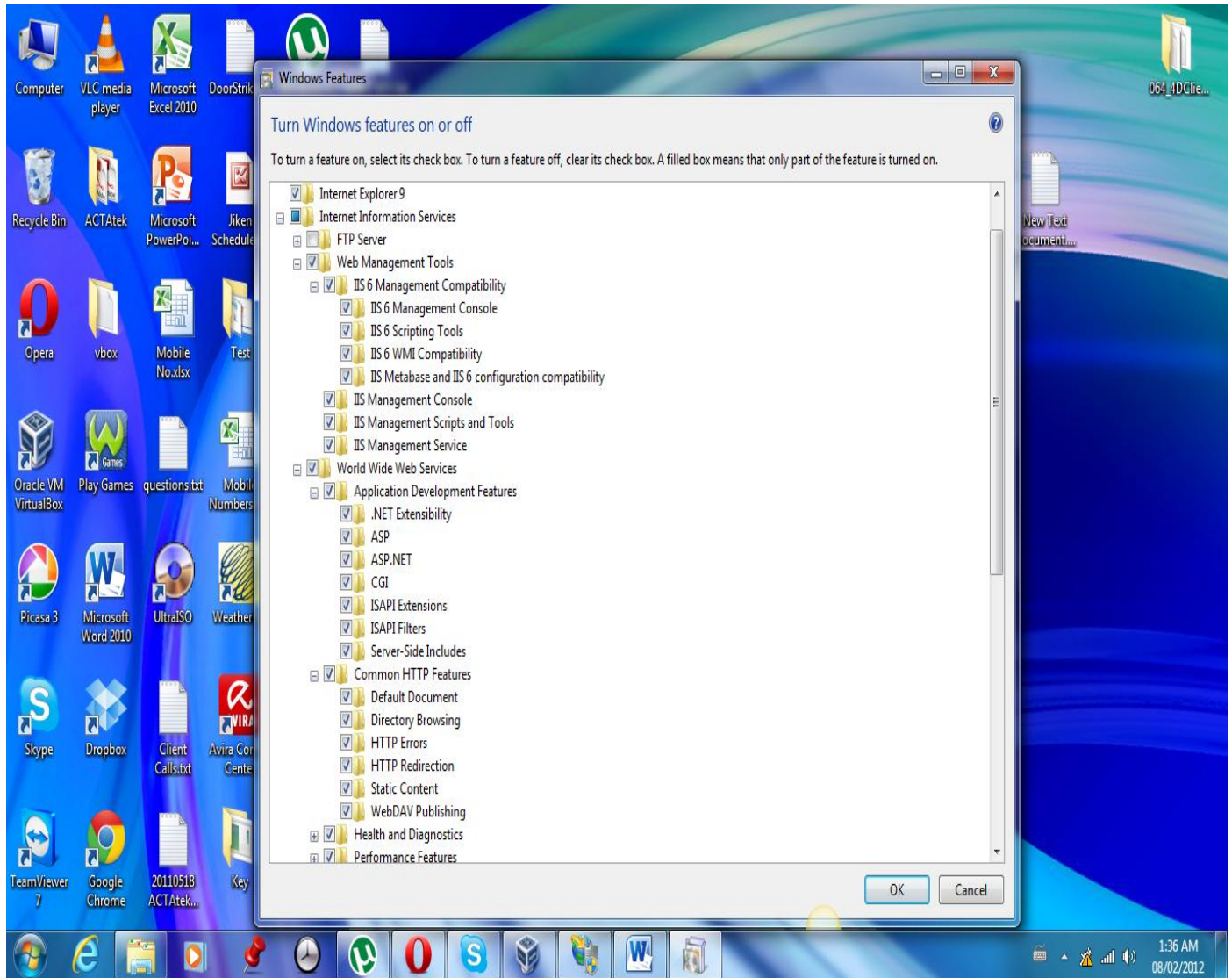
**Check on all Check boxes of Common HTTP Features**

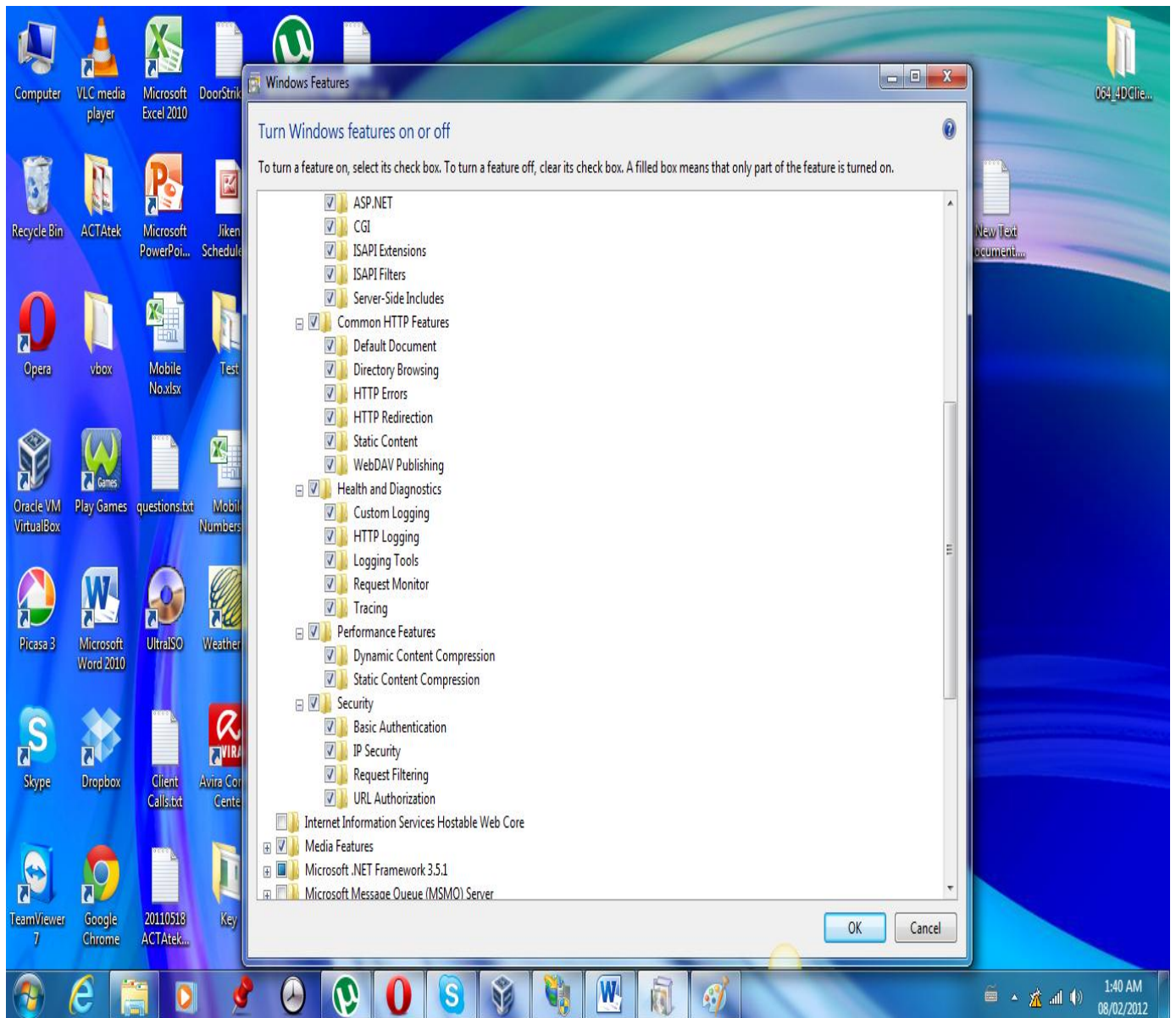
**Check on all Check boxes of Health and Diagnostics**

**Check on all Check boxes of Performance Features**

**Check on all Check boxes of Security**

**As shown in Diagram.**

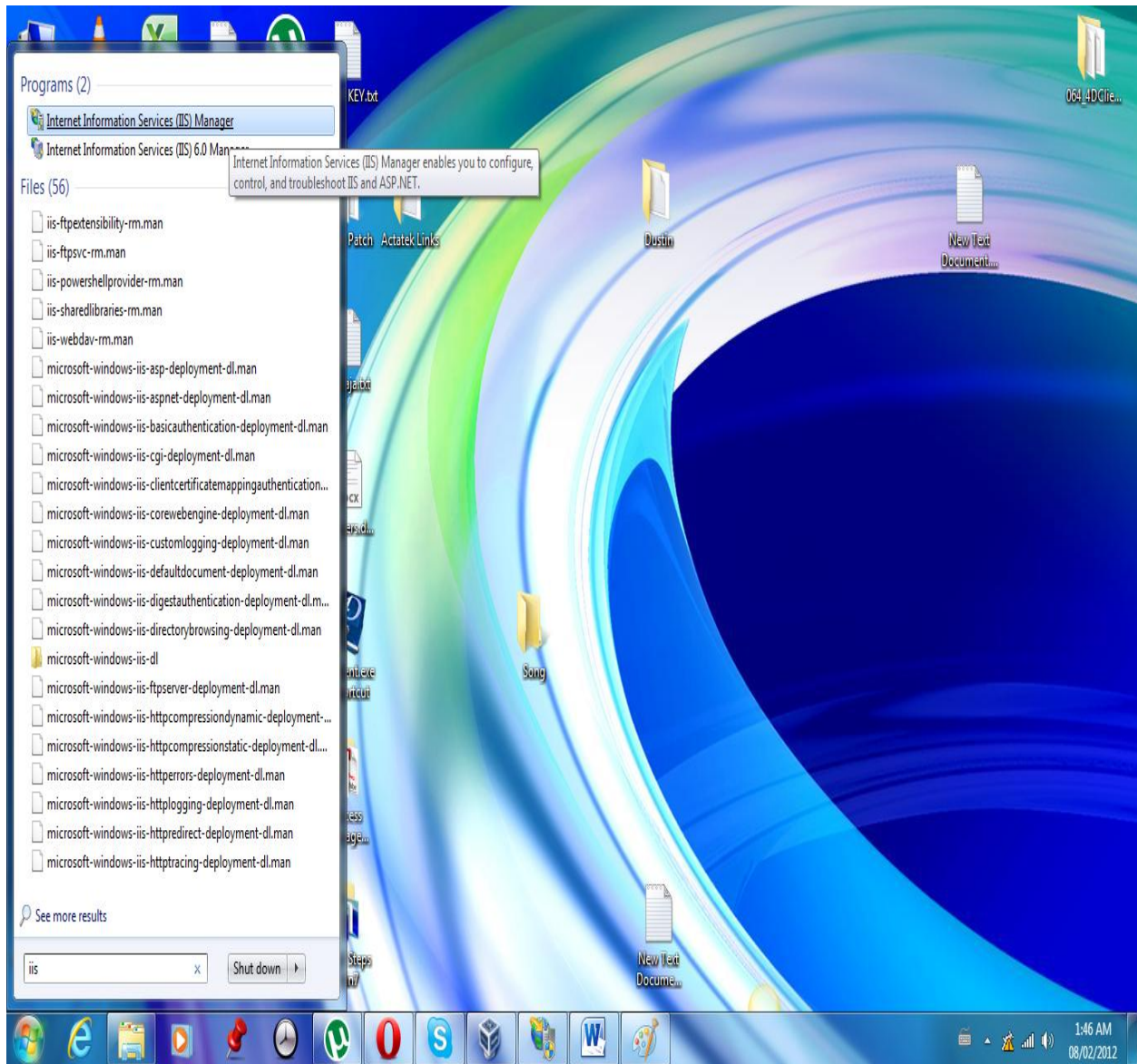




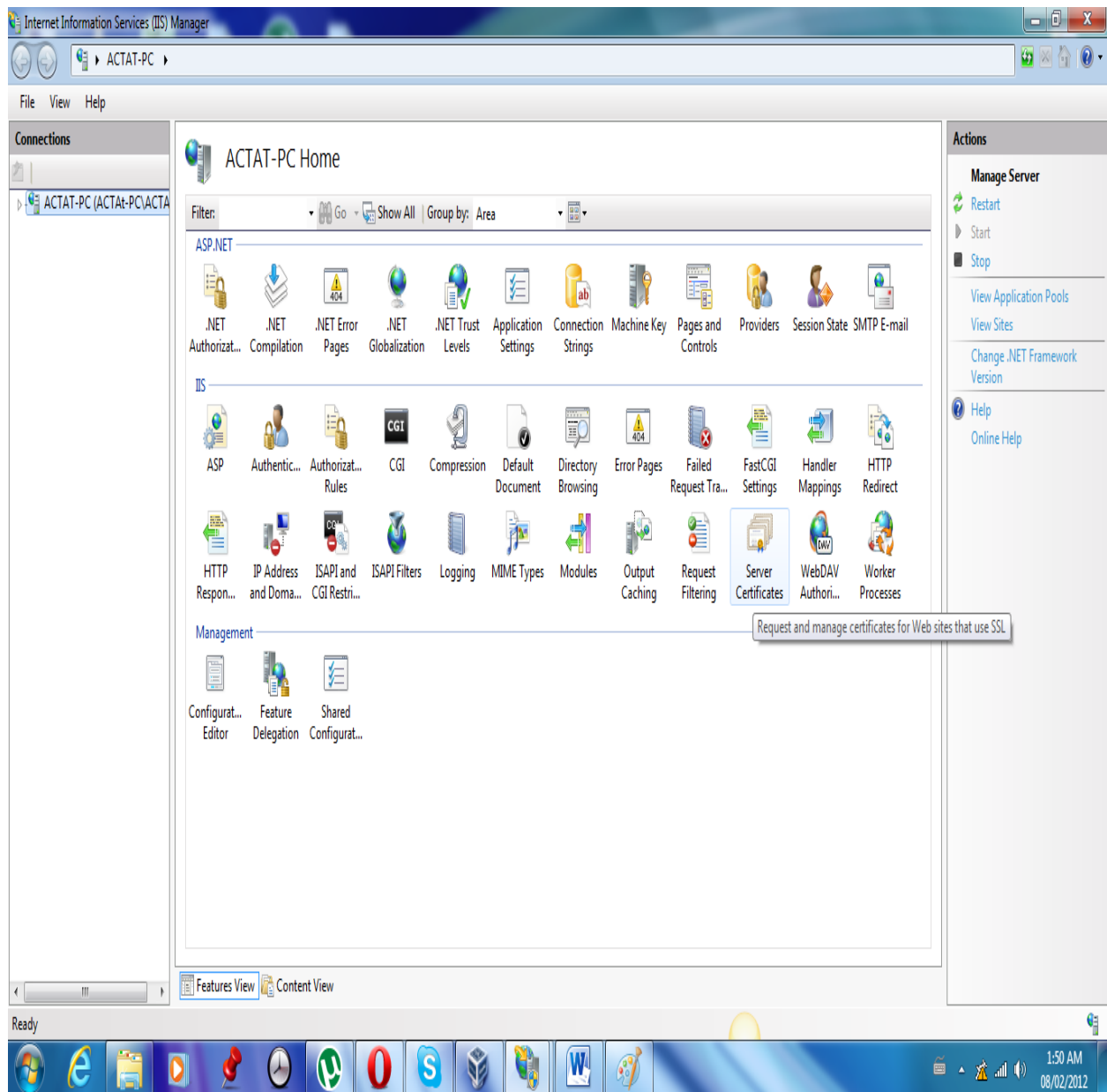
**Step3: Click OK and Wait till it install all Features**



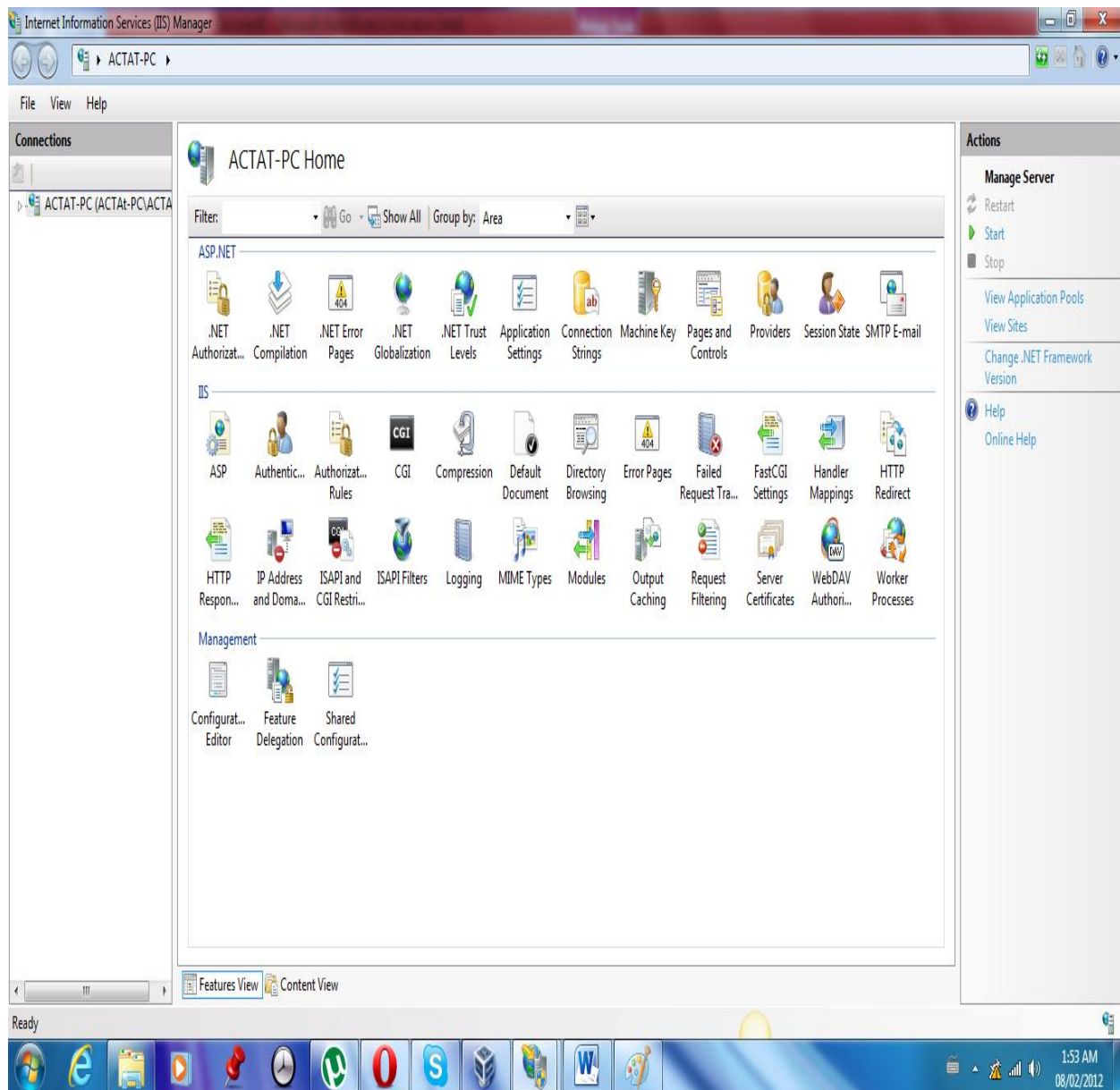
## Step4: Open Internet Information Service (IIS) Manager



## Step 5: Stop IIS Service from Manage Server



**Step 6: Start IIS Service from Manage Server and close window.**



**Step7: Install AMS Setup**