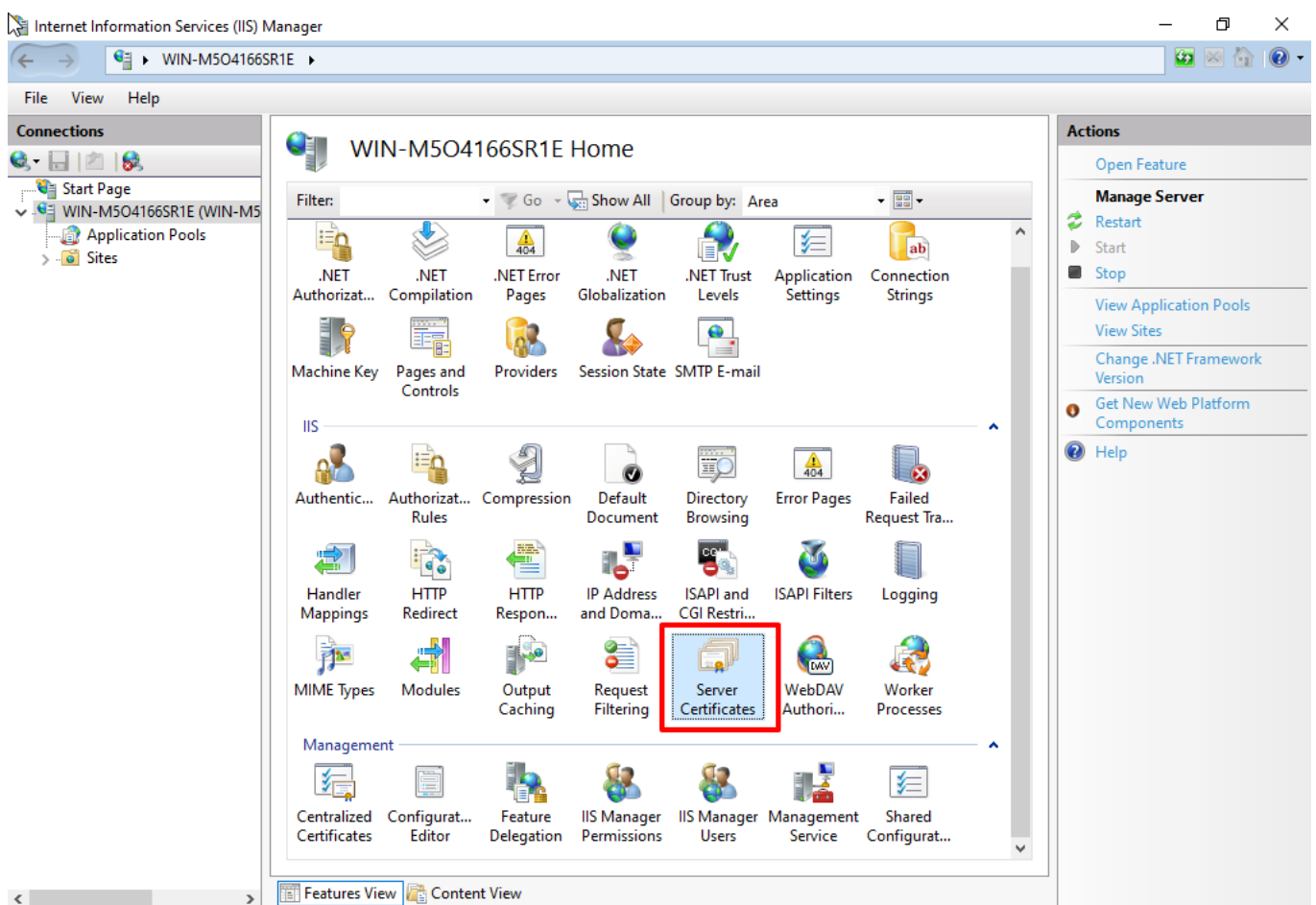


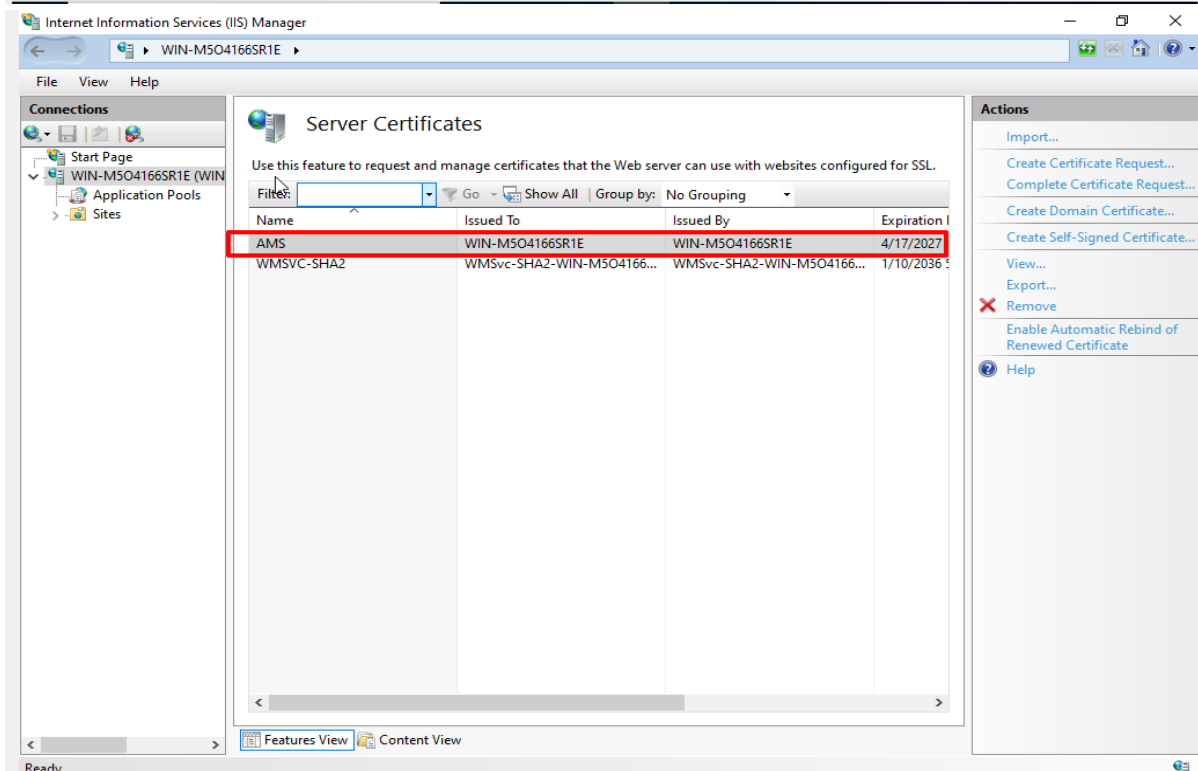
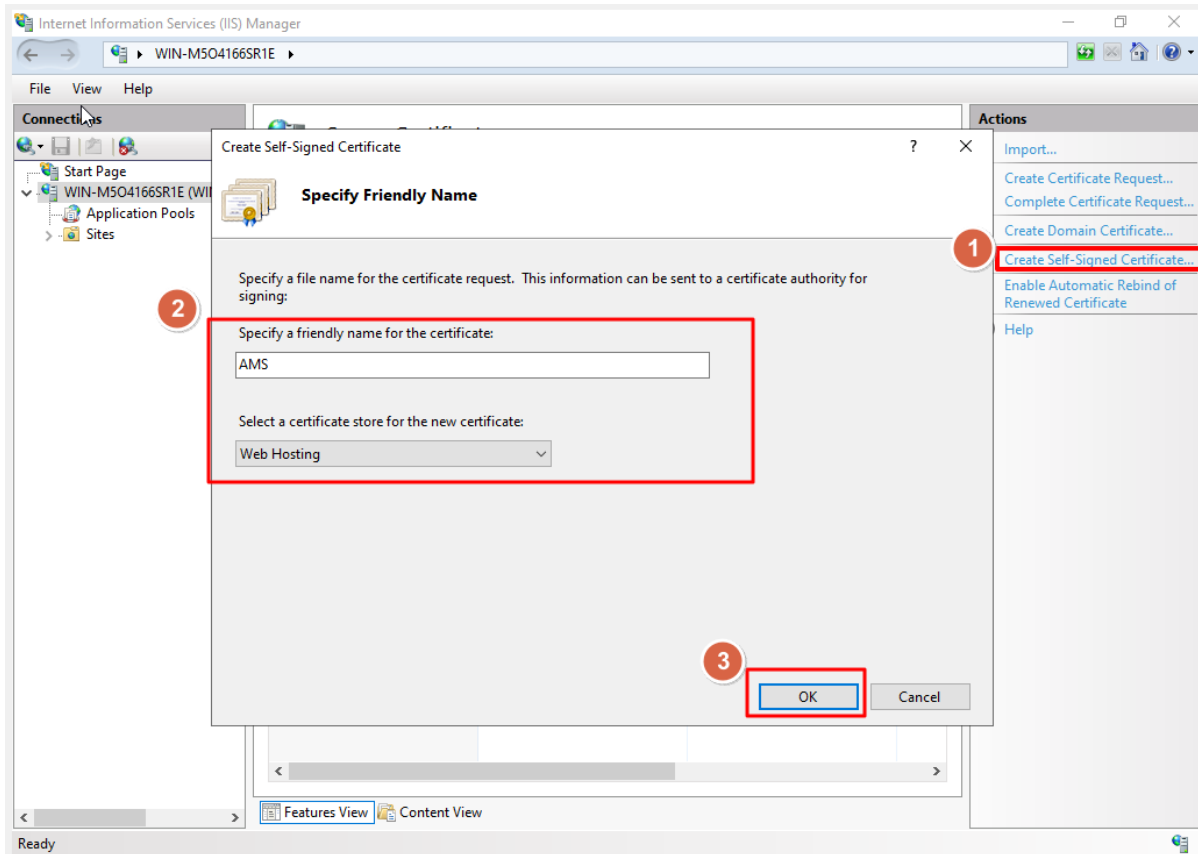
Configuring AMS to Support Encrypted SSL Communication (IIS versions : Windows Server 2019/2022)

1. Obtain a Certificate

- Open **IIS Manager** and select the server node.
- Double-click **Server Certificates**.

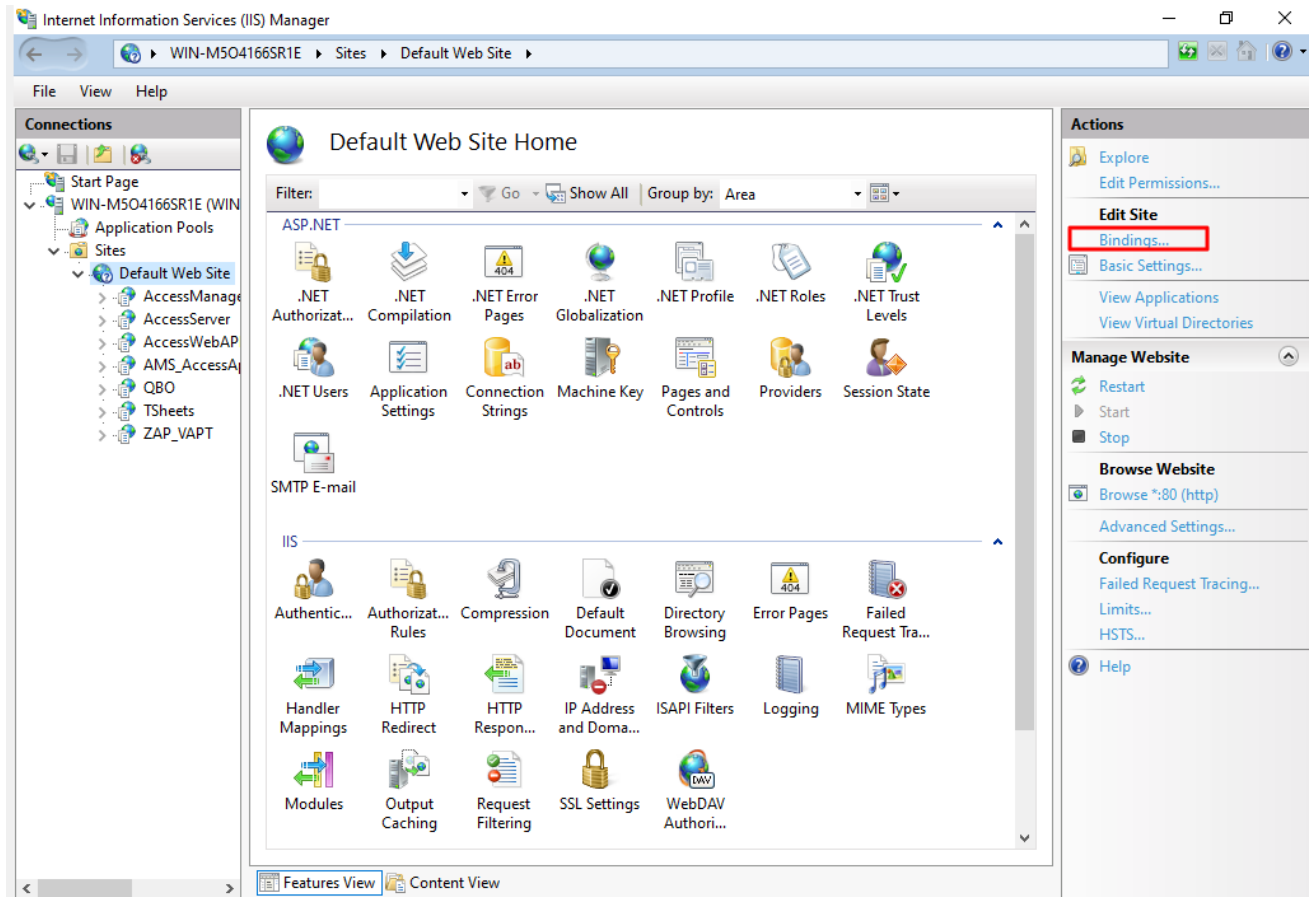


- In the **Actions** pane, choose **Create Self-Signed Certificate...** or use **Import...** if you already have a certificate from a trusted Certificate Authority (CA).
- Enter a friendly name e.g. AMS, Select the **Web Hosting** and click **OK**.
- The certificate will be marked for **Server Authentication** and can be used for HTTPS encryption.

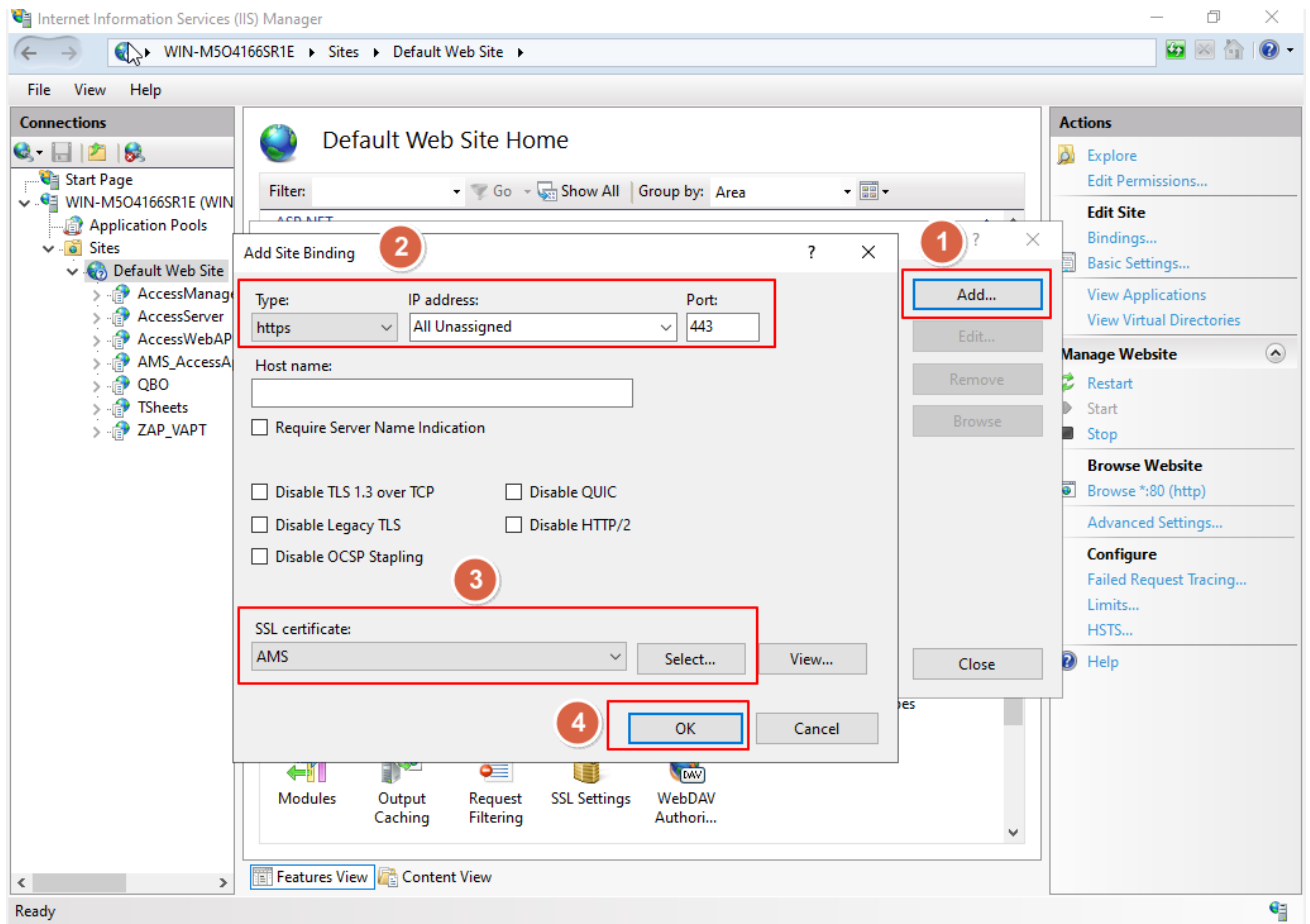


2. Create an SSL Binding

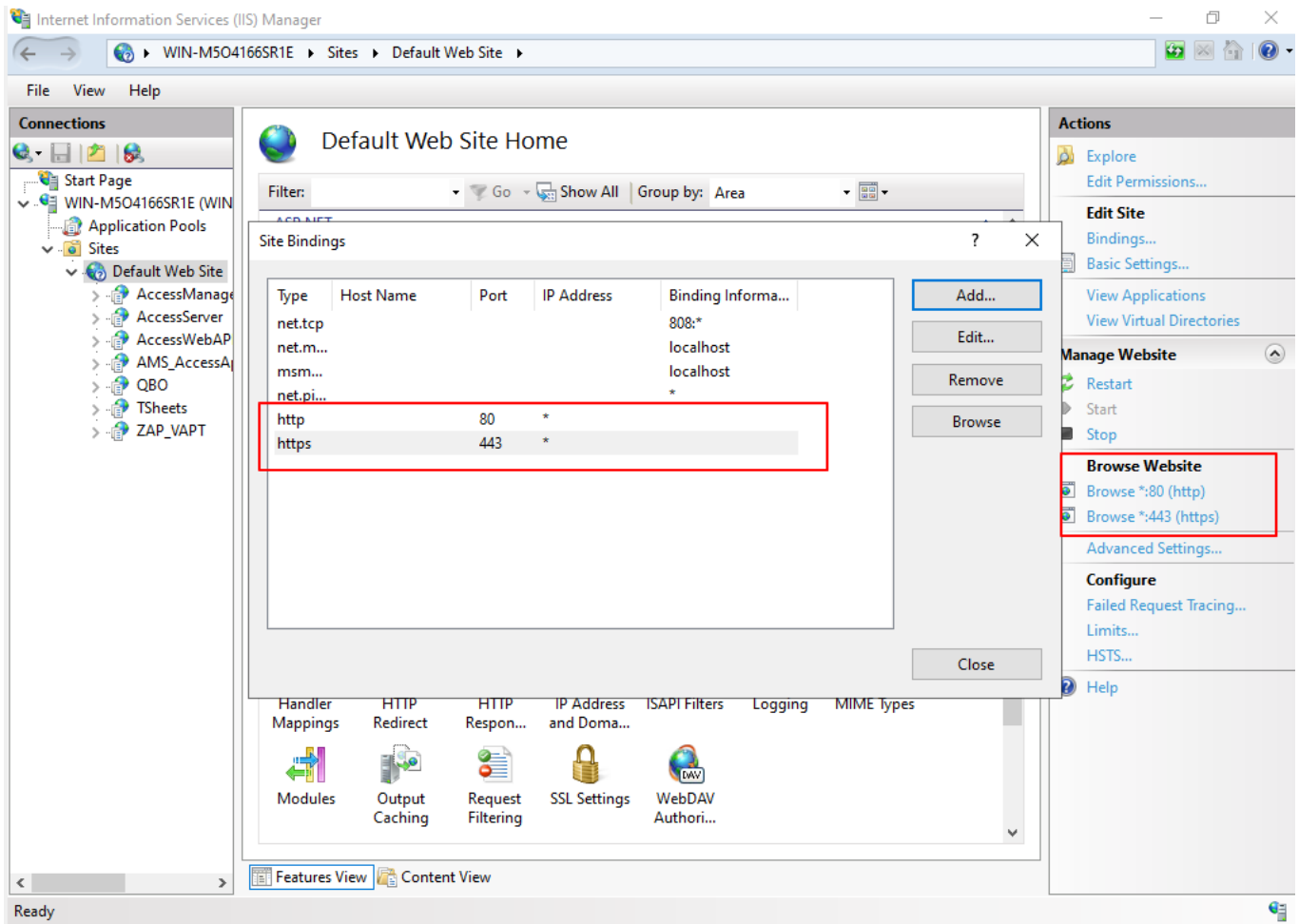
- In **IIS Manager**, expand **Sites** and select your AMS site.
- In the **Actions** pane, click **Bindings...**



- In the **Site Bindings** window, click **Add...**
- Set **Type** to **https**, **Port** to **443**, and select your SSL certificate from the drop-down list.
- Click **OK** to save.

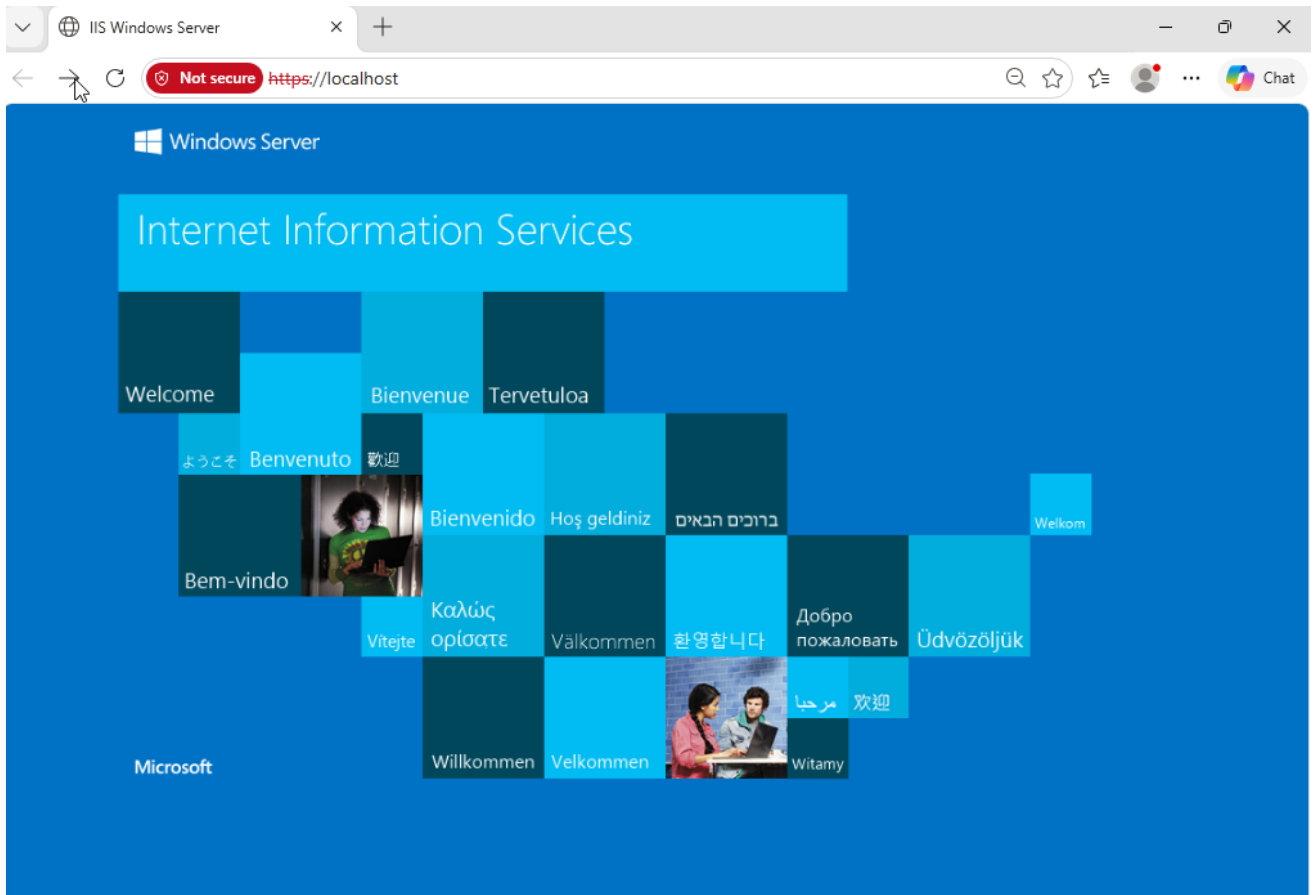


- You should now see both HTTP (port 80) and HTTPS (port 443) bindings listed.



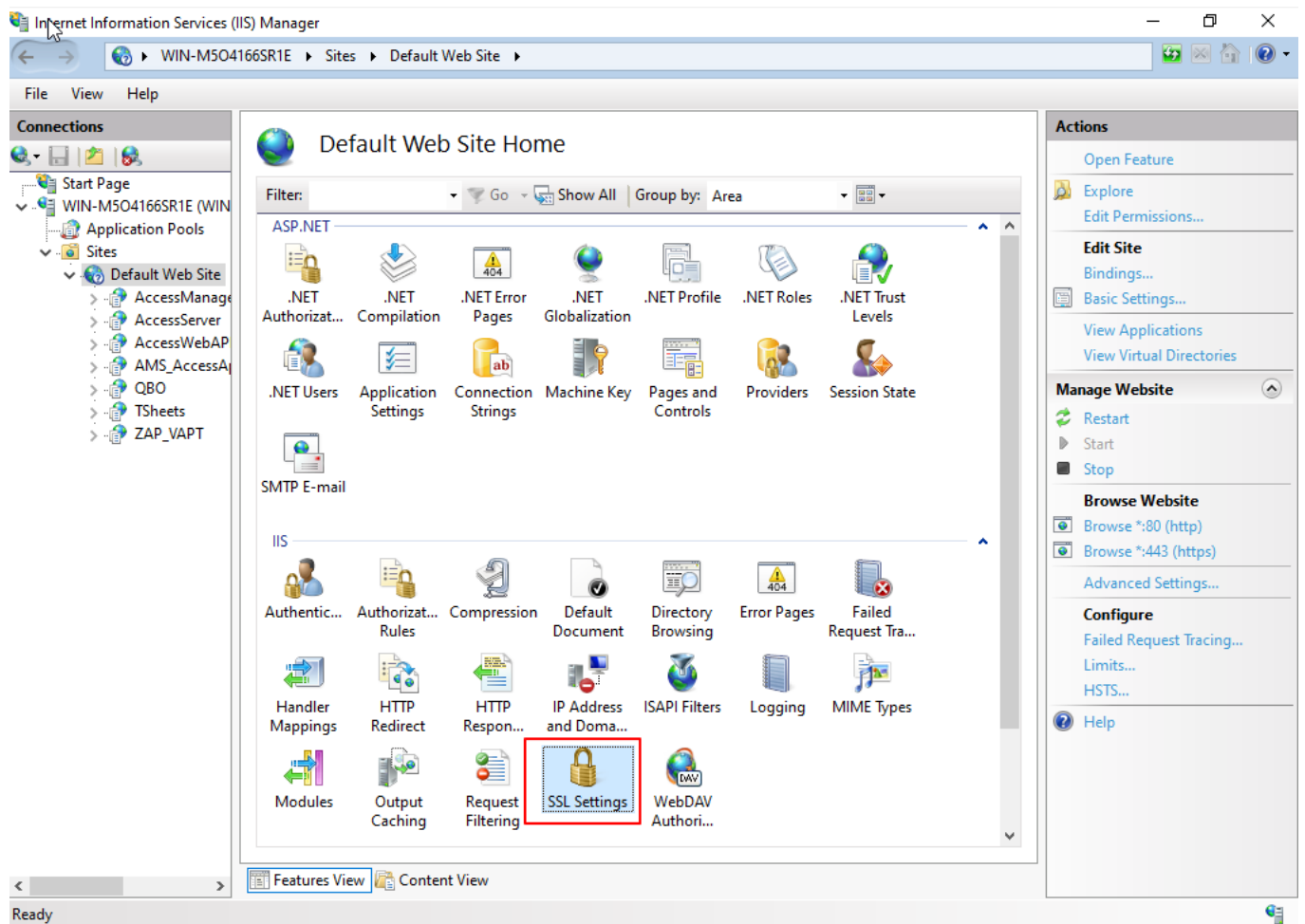
3. Verify the SSL Binding

- In the **Actions** pane, under **Browse Website**, click the HTTPS link (e.g., **Browse :443 (https)*).
- If using a self-signed certificate, browsers will display a warning since it is not issued by a trusted CA.



4. Configure SSL Settings

- Select your AMS site in **IIS Manager**.
- Double-click **SSL Settings**.
- Options include:
 - **Require SSL** – forces all connections to use HTTPS.
 - **Client certificates** – choose ignore.
- Click **Apply** to save changes.



Internet Information Services (IIS) Manager

WIN-M5O4166SR1E > Sites > Default Web Site

File View Help

Connections

- Start Page
- WIN-M5O4166SR1E (WIN)
- Application Pools
- Sites
 - Default Web Site
 - AccessManage
 - AccessServer
 - AccessWebAP
 - AMS_AccessA
 - QBO
 - TSheets
 - ZAP_VAPT

SSL Settings

This page lets you modify the SSL settings for the content of a website or application.

Require SSL **1**

Client certificates:

Ignore **2**

Accept

Require

Actions

- Apply **3**
- Cancel
- Help

Features View Content View

Configuration: 'localhost' applicationHost.config, <location path="Default Web Site">

5. Browse the AccessManagerSuite webpage via HTTPS

Open your browser (e.g., Microsoft Edge) and navigate to the AMS site using the HTTPS URL.

