

# ACTAtek RTSP Playback with VLC Player

## Quick Guide

**Purpose:** This guide explains how to enable RTSP streaming on an ACTAtek device, install VLC Player, connect to the stream, and confirm live playback.

### 1. Prerequisites

Item	Details
ACTAtek access	Admin access to the ACTAtek web interface.
Network	The PC running VLC must be able to reach the ACTAtek device IP address.
RTSP URL format	rtsp://<ACTAtek device IP>:8554/cam
Software	VLC media player installed on the PC or laptop.

### 2. Download and install VLC Player

1. Open a web browser on the PC that will be used to view the RTSP stream.
2. Download VLC Player from [www.videolan.org/vlc/](http://www.videolan.org/vlc/).
3. Run the installer and complete the default installation wizard.
4. After installation, open VLC media player.

### 3. Enable RTSP / RTP streaming on ACTatek

5. Log in to the ACTatek web admin page.
6. Go to Terminal > **Capture Picture**.
7. Set RTP mode to **RTSP Server mode**.
8. Click **Submit** and verify that RTP status shows Running.

#### Reference screenshot: ACTatek Capture Picture settings

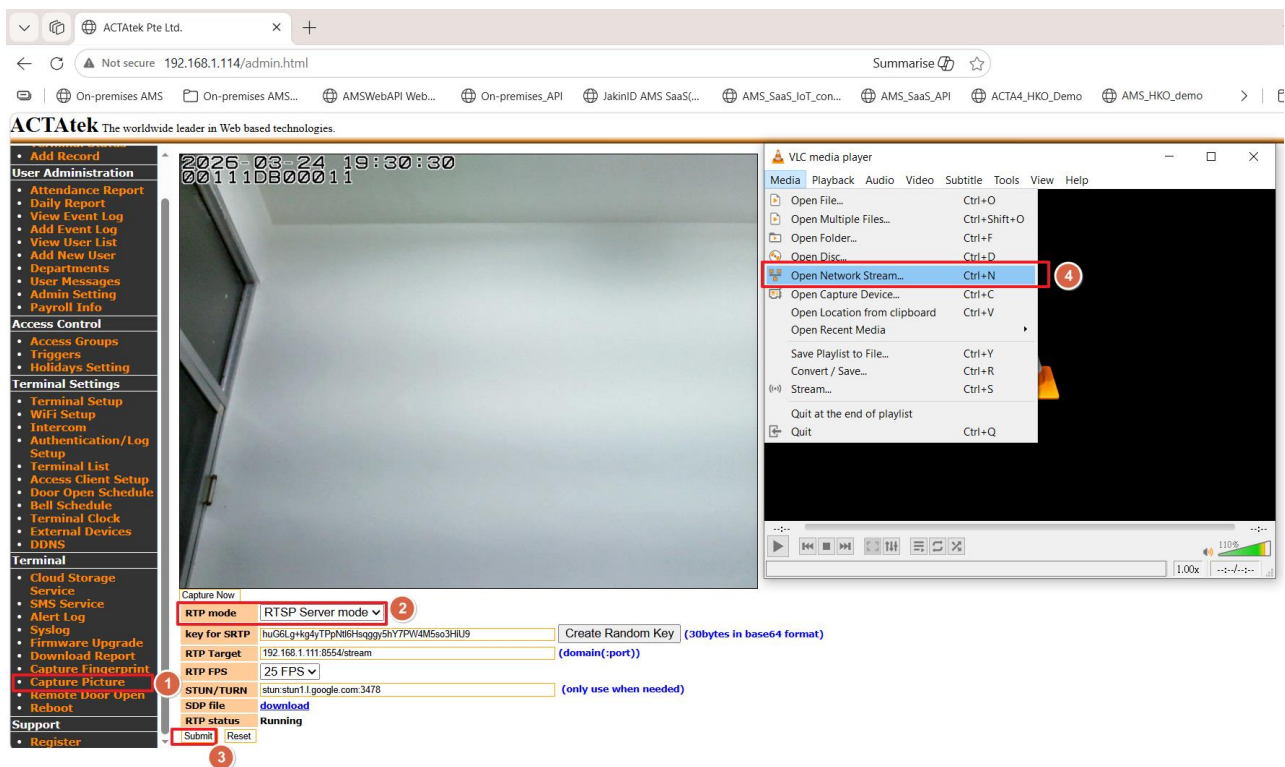


Figure 1. Enable RTSP Server mode, submit the settings, then use VLC Open Network Stream.

### 4. Open the RTSP stream in VLC

9. In VLC, click Media > Open Network Stream.

10. In the Network tab, enter the ACTAtek RTSP URL using this format:

**rtsp://<ACTAtek device IP>:8554/cam**

11. Click **Play** to start the live stream.

**Example RTSP URL:** rtsp://192.168.1.114:8554/cam

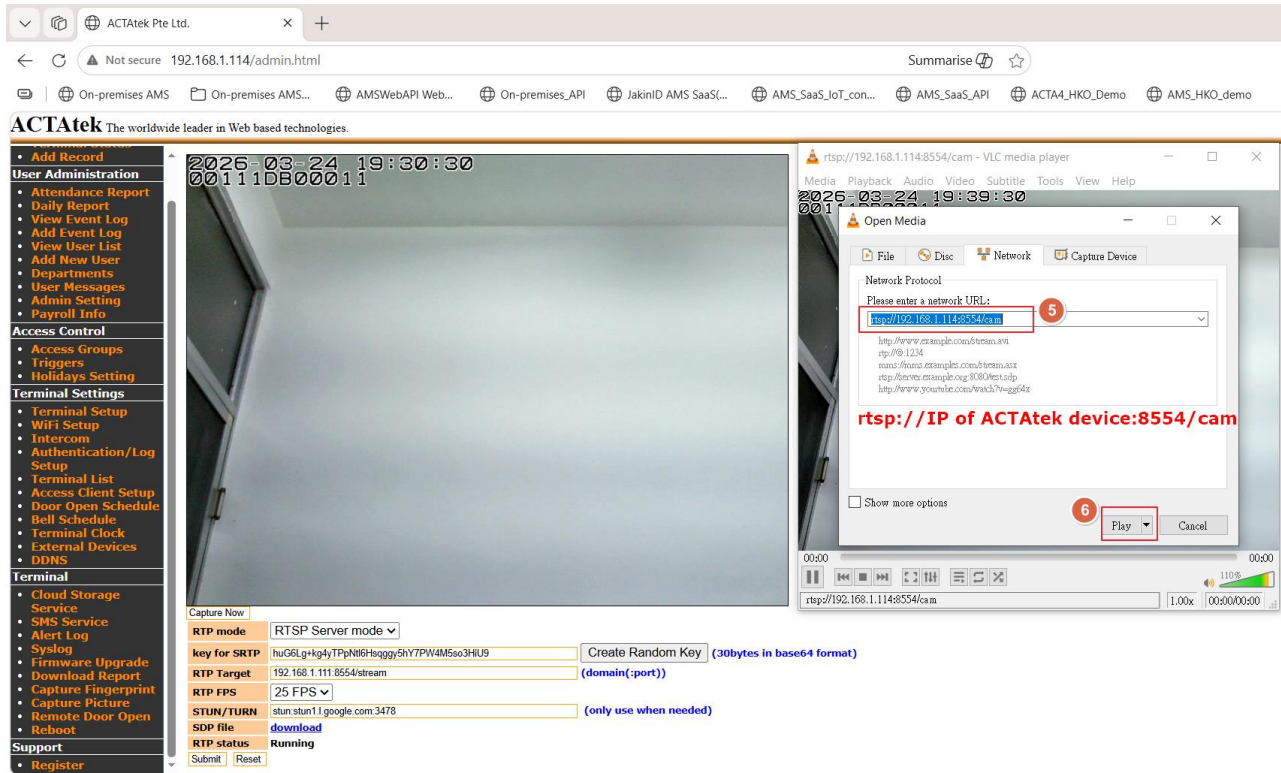


Figure 2. Enter the RTSP network URL in VLC and click Play.

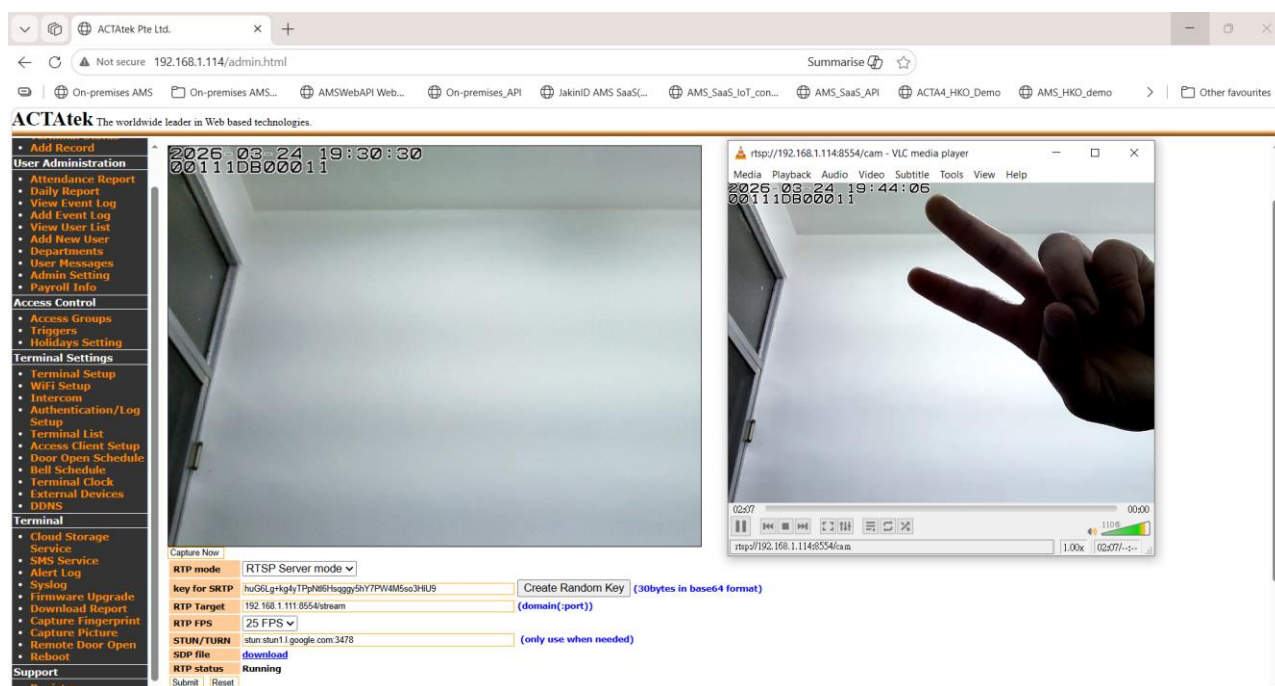


Figure 3. Example of successful live playback from the ACTatek device in VLC.

## 5. Verify successful playback

- The VLC window should display the live ACTatek camera image.
- You should see the device timestamp and serial number overlay on the video.
- If the image updates in real time, the RTSP connection is working properly.

## 6. Basic troubleshooting

Issue	Recommended check
No video in VLC	Check that the ACTatek device is online and that RTP status is Running.
Cannot connect to stream	Confirm the IP address, port 8554, and URL path /cam are entered correctly.
Timeout or black screen	Check firewall rules, LAN routing, and whether the viewing PC can ping the ACTatek device.
Wrong stream settings	Return to Capture Picture and confirm RTSP Server mode is selected before clicking Submit.

## 7. Summary

To play back ACTatek RTSP video in VLC, first enable **RTSP Server mode** in the ACTatek Capture Picture page, then open VLC and connect using the RTSP URL format **rtsp://<ACTatek device IP>:8554/cam**.