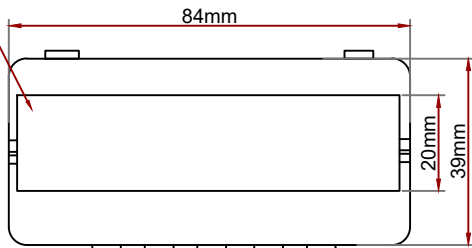
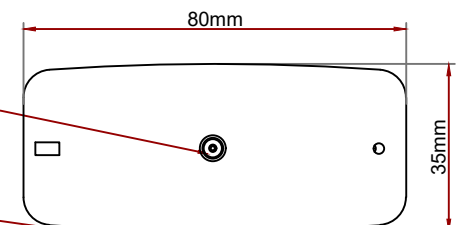


TOP VIEW OF TEMSEN - IR THERMAL BODY TEMPERATURE DETECTION UNIT



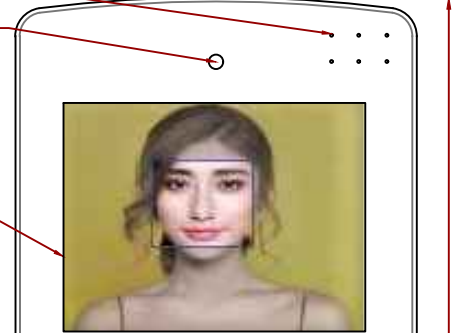
TOP VIEW

TEMSEN - IR THERMAL BODY TEMPERATURE DETECTION UNIT



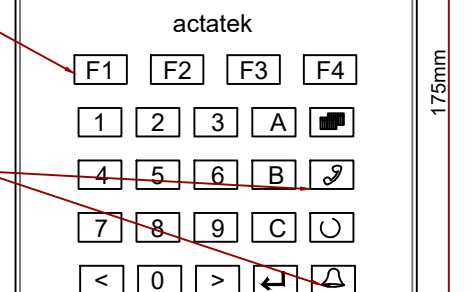
SPEAKERS

BUILT-IN CMOS CAMERA FACIAL RECOGNITION & QR AUTHENTICATION



LCD SCREEN WITH STANDBY INFORMATION

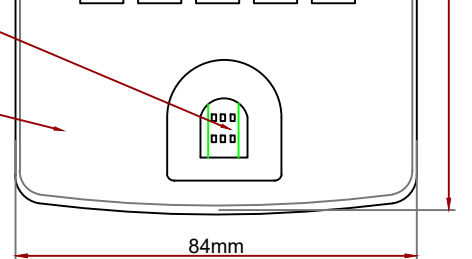
KEY PAD



KEYPAD WITH SIP INTERCOM AND DOOR ALARM

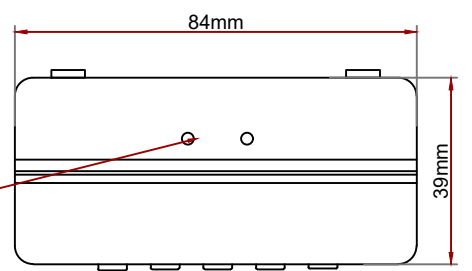
500dpi OPTICAL FINGER PRINT SCANNER

RFID CARD READER ANTENNA WITHIN HOUSING ARCHITECTURE

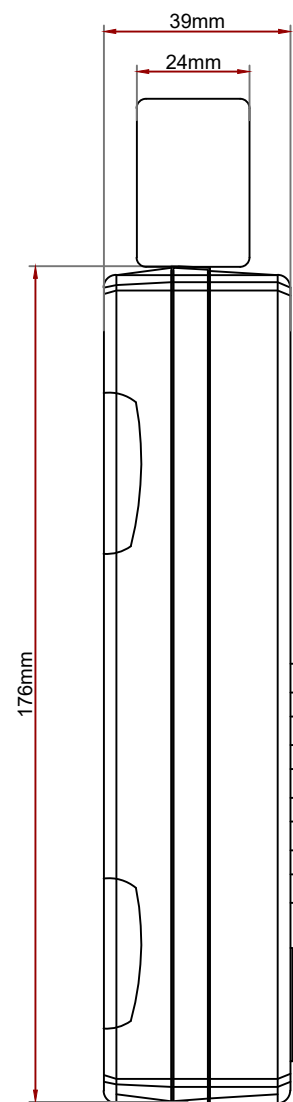


FRONT ELEVATION

MIC

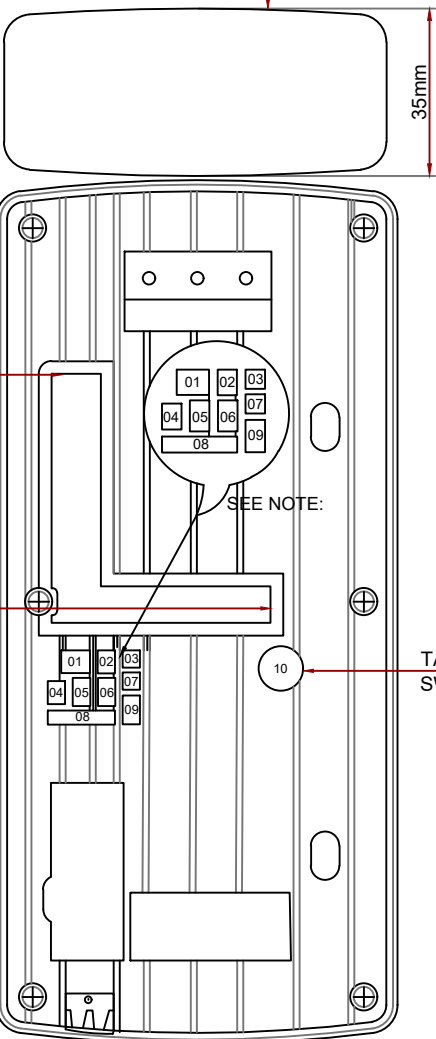


BOTTOM VIEW

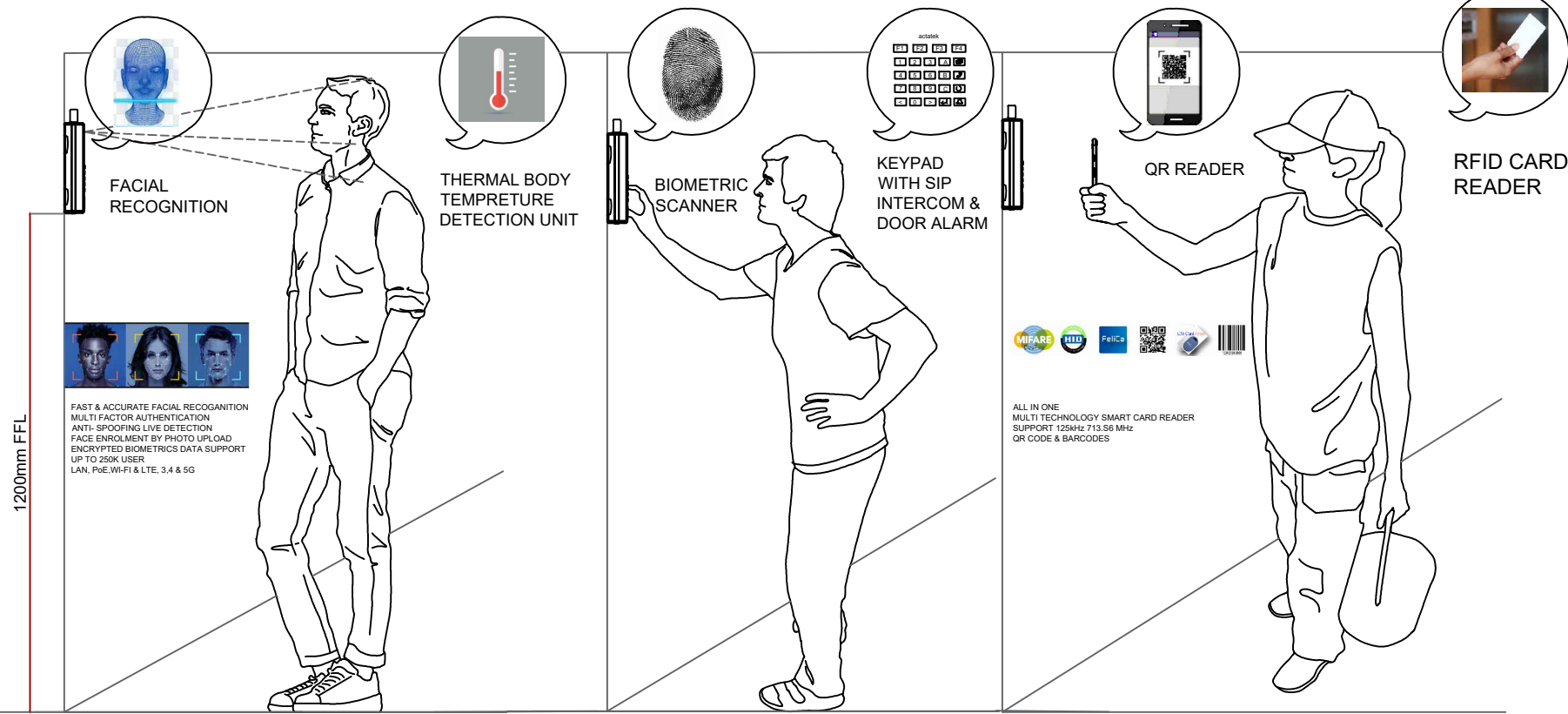


SIDE ELEVATION

TEMSEN-IR THERMAL BODY TEMPERATURE DETECTION UNIT



REAR ELEVATION



MULTIFACTOR AUTHENTICATION

ACCESS CONTROL & TIME ATTENDANCE



**Standard Features**

Model:	Facial	Fingerprint	Standard	Fingerprint + Standard	Keypad
Fingerprint enrollment	Optional	✓	Optional	✓	Optional
Built-in smartcard reader	Optional	Optional	✓	✓	Optional
Face enrollment with video camera	Optional	Optional	✓	✓	Optional
Live detection	Optional	Optional	✓	✓	Optional
Built-in web and database server	✓	✓	✓	✓	✓
Number of users	basic 1,000 users can be upgrade to 100,000+				
Max. transaction records stored	10,000,000 logs / 20,000 images				
Static IP address assignment	✓	✓	✓	✓	✓
Dynamic IP address assignment	✓	✓	✓	✓	✓
Power Over Ethernet (Built-in)	Optional (IEEE 802.3af standards)				
Resolution of LCD	2.8" 64K/256K colour TFT screen 320 x 240 pixel resolution				
Non-volatile memory	4GB				
Computer OS support (with internet browser)	Mac OS Windows OS iPhone OS Unix Machine	Android Linux PC			
Valid characters for employee ID	0-9, A-C (max. 16 characters)				
Programmable function keys support	F1, F2, F3, F4				
Authentication time	< 1 second				
Fingerprint Users capacity	250,000 (1:1) / 20,000 (1:N)				
Face Users capacity	50,000 (1:1) / 60,000 (1:N)				
Alert	by email and SMS, LCD message displayed				
Temisen: Body Thermometer (optional)	Power supply: 12VDC from ACTatek device Measuring range: 35.0 C - 42.8 C Abnormal alert: 37.5 C - 38.0 C Red LED Lights Fever alert: 38.0 C - 42.8 C Red LED Blinks Measuring distance: 100mm - 250mm Accuracy: +/- 0.2C Speed: 600ms Interface: RS232				

Model:	Facial	Fingerprint	Standard	Fingerprint + Standard	Keypad
Database interface support	OOBC / JDBC				
Encryption	AES 256-Bit (continuous upgrade)				
Multi-lingual support	✓	✓	✓	✓	✓
Network interface (Built-in)	- 1,000 BaseT Ethernet (built-in) / SNMP support - WiFi (IEEE 802.11 a/b/g/n) with 2.4G/5G				
IO interface	- RS-232 / RS-485 - Wiegand output (26bit) - Power to strike, 12VDC at max 500mA				
Export Report	CSV / Text file				
Remote operation	✓	✓	✓	✓	✓
Operation temperature	-20°C to 60°C				
Modules	CPU / Fingerprint	RFID card	PUE	Mitara / Desfire	13.56MHz WFI
	HID Proximity	ISO14443A/B	LTE / 4G	HID iClass / FelCa	ISO15693 GPS
	EM	125kHz		CEPAS Card (Singapore)	13.56MHz
	CMOS/Video camera	Colour LCD & keypad			
Modes of authentication	Fingerprint, Facial, Smartcard, PIN, QR code ID + Fingerprint, Facial + Fingerprint Smartcard + Fingerprint, Smartcard + Facial Smartcard + PIN, QR code + Facial Optional mobile battery				
Relay / Doorbell support	1 relay / 1 doorbell				
IP Intercom (Built-in)	Optional (GIP-enabled VoIP Intercom)				
LTE4G module (Built-in)	Optional				
Standards (Fingerprint / Facial)	Fingerprint: ISO 19794-2, ISO 19794-3, ISO 19794-4, ISO 19794-5, ISO 19794-6, ISO 19794-7, ISO 19794-8, ISO 19794-9, ISO 19794-10, ISO 19794-11, ISO 19794-12, ISO 19794-13, ISO 19794-14, ISO 19794-15, ISO 19794-16, ISO 19794-17, ISO 19794-18, ISO 19794-19, ISO 19794-20, ISO 19794-21, ISO 19794-22, ISO 19794-23, ISO 19794-24, ISO 19794-25, ISO 19794-26, ISO 19794-27, ISO 19794-28, ISO 19794-29, ISO 19794-30, ISO 19794-31, ISO 19794-32, ISO 19794-33, ISO 19794-34, ISO 19794-35, ISO 19794-36, ISO 19794-37, ISO 19794-38, ISO 19794-39, ISO 19794-40, ISO 19794-41, ISO 19794-42, ISO 19794-43, ISO 19794-44, ISO 19794-45, ISO 19794-46, ISO 19794-47, ISO 19794-48, ISO 19794-49, ISO 19794-50, ISO 19794-51, ISO 19794-52, ISO 19794-53, ISO 19794-54, ISO 19794-55, ISO 19794-56, ISO 19794-57, ISO 19794-58, ISO 19794-59, ISO 19794-60, ISO 19794-61, ISO 19794-62, ISO 19794-63, ISO 19794-64, ISO 19794-65, ISO 19794-66, ISO 19794-67, ISO 19794-68, ISO 19794-69, ISO 19794-70, ISO 19794-71, ISO 19794-72, ISO 19794-73, ISO 19794-74, ISO 19794-75, ISO 19794-76, ISO 19794-77, ISO 19794-78, ISO 19794-79, ISO 19794-80, ISO 19794-81, ISO 19794-82, ISO 19794-83, ISO 19794-84, ISO 19794-85, ISO 19794-86, ISO 19794-87, ISO 19794-88, ISO 19794-89, ISO 19794-90, ISO 19794-91, ISO 19794-92, ISO 19794-93, ISO 19794-94, ISO 19794-95, ISO 19794-96, ISO 19794-97, ISO 19794-98, ISO 19794-99, ISO 19794-100				
Safety standard/Casing	CE, FCC, IP65-Resist ingress dust, salt fog protection (Standard mode) / Access Manager Suite** (Client Server mode)				
Software support	Agnet / Access Manager Suite** (Client Server mode)				
** Access Manager Suite	Hardware Requirements (Minimum) ● CPU: Intel Core 2 Duo 2.6 GHz or higher ● Memory: 4GB ● Storage: 20 GB free ● Ethernet 100 Base-T				
Software Requirements	● Windows 10 or Server 2012 above version ● Microsoft SQL Server for database server ● SQL Server 2008 or above version ● Microsoft .Net 3.5 runtime (Note: Access Manager & SAP/ERP will be provided for 3rd party integration)				

GENERAL NOTES

- This drawing is to be read in conjunction with all relevant M&E Drawings, Bill of Quantities, Specifications and Architect & Structural Engineers Drawings.
- All dimensions indicated on the drawings are in mm unless otherwise indicated.
- Do not scale off this drawing. Exact measurements are to be taken on site by the Contractor in accordance with the latest Architectural and Structural drawings for the manufacturing of the services. Figured dimensions can be followed instead of scaling from drawings. Any discrepancies are to be confirmed with the Engineer.
- The Contractor is to confirm all dimensions on site prior to commencement and to inform the Engineer of any discrepancies in charge.
- Any part not specified, is to be confirmed with the Engineer in charge.
- Provisions as per approved practices should be made for installations at expansion and settlement joints to allow for movement of building structure. Refer to Architectural Drawings.

NOTES:

- DC OUT :- Used for 12V 1A power output e.g external 1/0 board.
- VIDEO :- Used for video output. The output can be connected to any television or monitors with AV input.
- ALARM :- Used for alarm purpose, when the case of the unit is open, the alarm will be triggered. When it is triggered, the two pins will be short circuit.
- DOOR SW :- Used as door switch.
- RS232 :- Used for debug or connecting external I/O board.
- RS485 :- Reserver for Wiegand output 26bit (\*on demand basis\*)
- DOOR BELL :- Working as a doorbell. If doorbell key on the front panel is pressed or it is enabled from the web page the two pins will be short circuit
- COM PORT :- Used to connect external barcode/magnetic trip reader.
- STRIKE :- Used for door strike. NO (normal open) is open circuit normally, and will be short circuit when door is open. NC (normal close) is short circuit normally, and will be open circuit when door is open.
- Tamper Alarm Switch
- IP65 construction for internal / external use & applications



**bimadaptics**  
engineers' choice  
BIM Adaptics Design Services  
IFZA Dubai, Dubai Digital Park  
Dubai Silicon Oasis, Dubai - UAE  
<https://bimadaptics.com/> [connect@bimadaptics.com](mailto:connect@bimadaptics.com)

**CADEOSYS**  
PROFICIENCY IN ENGINEERING SERVICES  
CADEOSYS (CAD OUTSOURCE SERVICE)  
MANNOM ARCADE, BUILDING NO-2068  
2ND FLOOR, MARADU, KOCHIN-682038  
<https://www.cadeosys.com> [helpdesk@cadeosys.com](mailto:helpdesk@cadeosys.com)

REV #	DATE	ISSUE FOR
00		ISSUE FOR REVIEW

CLIENT: **JAKIN-ID**  
PROJECT: **ACTATEK**

TITLE: **Jakin Actatek IoT Multi-Factor Credentials Authorisation Security Access Control , With Facility, Workforce Management & COVID Risk Assessment Using The On Premise Or SaaS AMS Platform.**

DRAWN	CHECKED	SCALE
WLN	SJN	1:100
DRAWING NUMBER	SHEET	DATE
RFID_05_001	A3	05-10-2021