

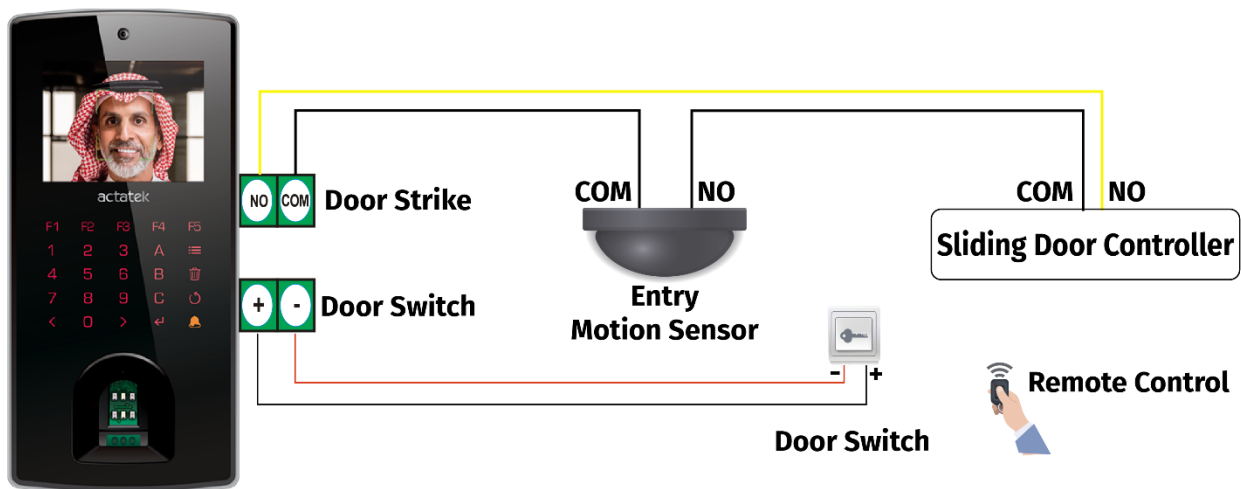
ACTAtek Device Installation with Automatic Sliding Door and Entry Motion Sensor

Requirements:

1. **Door Open Schedule Activation:**
 - The motion sensor should be active during office hours.
 - The motion sensor should be enabled automatically without requiring user authentication during office hours.

2. **Restricted Hours Authentication:**
 - During restricted hours, users must authenticate via ACTAtek to enable the motion sensor and open the door.

Diagram and Connections

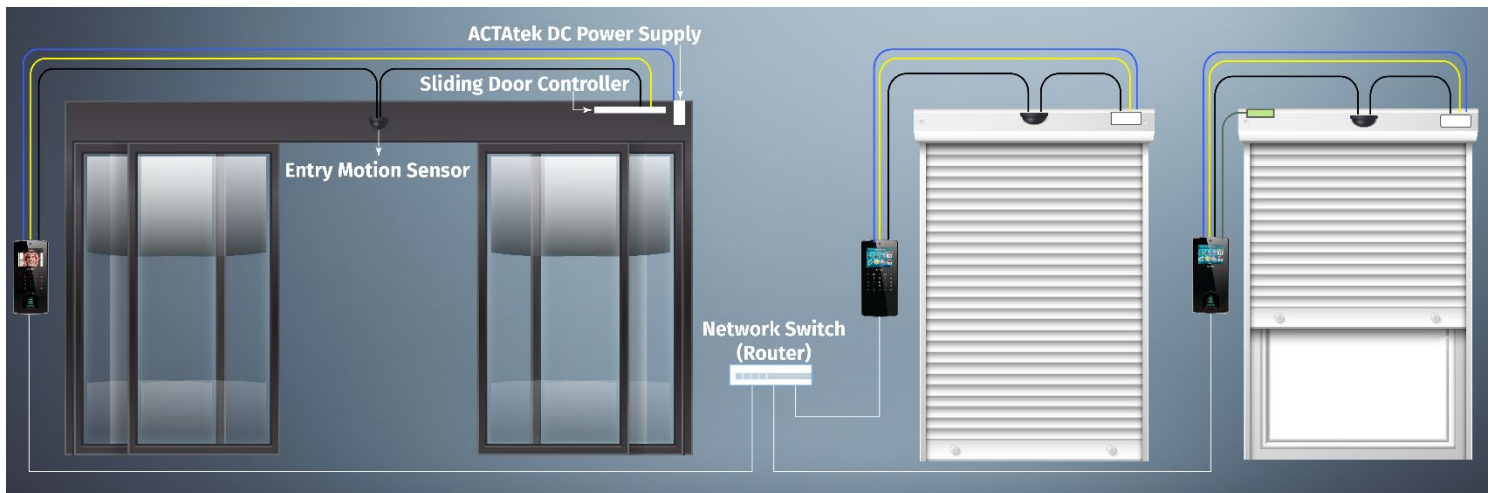


1. ACTAtek Device Back I/O Panel:

- **Door Strike:** Connected to control the door lock mechanism.
 - NO (Normally Open), COM (Common)
- **Door Switch:** Connected to release the door manually.
 - Door Switch, Door Switch (GND)

2. Connections:

- **Sliding Door Controller:**
 - Connected to the door strike (NO) on the ACTAtek device to control the opening/closing of the sliding door.
- **Entry Motion Sensor:**
 - Connected to the door strike (NC) on the ACTAtek device to the Sliding Door Controller. The motion sensor triggers the sliding door controller, which then engages the door strike
- **Push Button:**
 - Connected to provide a manual override to open the door.



Suggestions for Correct Operation

1. **Ensure Proper Scheduling Configuration:**
 - Configure the door open schedule in the ACTAtek system to enable the motion sensor during office hours. This can be done through the device's software or management interface.
2. **Restricted Hours Setup:**
 - Configure the users with authentication methods (Biometrics, RFID, QR Code, UHF, etc.) to access the ACTAtek device to open the door during restricted hours

3. Testing and Validation:

- After configuring the system, perform thorough testing during both office hours and restricted hours to ensure:
 - The motion sensor activates the sliding door as expected during office hours.
 - Authentication is required and successfully enables the motion sensor during restricted hours.

Final Notes

- Verify the power supply connections and ensure all components are receiving the necessary power.
- Confirm that the ACTAtek firmware and software are up-to-date to leverage the latest features and security updates.
- Document the configuration settings for future reference and troubleshooting.