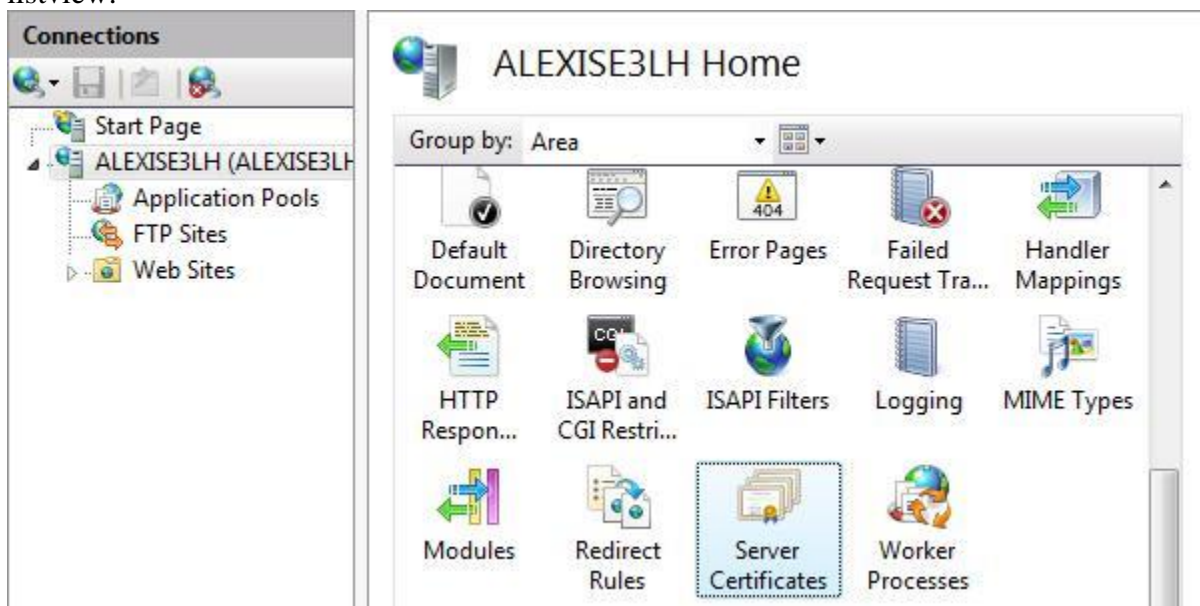


Topic: How to configure AMS to support the encrypted SSL communication?

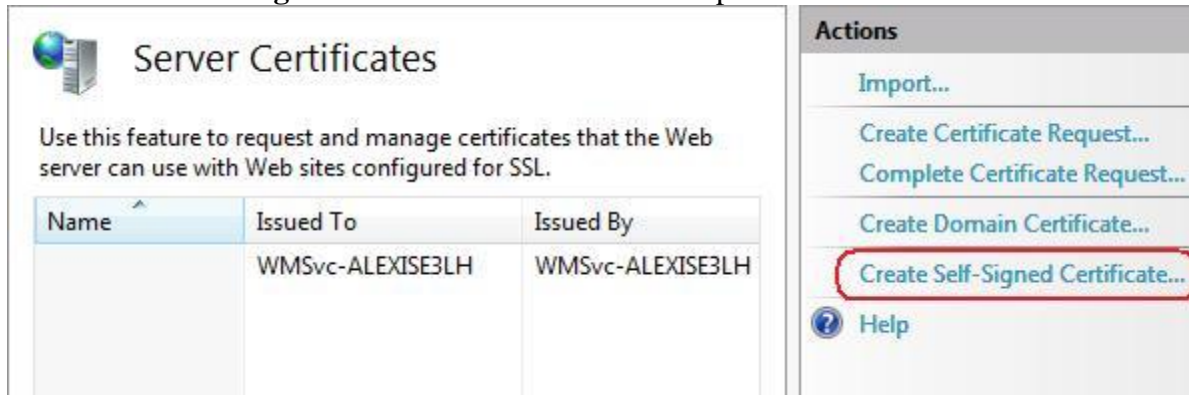
PartA. IIS Manager

1.Obtain a Certificate

Select the server node in the treeview and double-click the **Server Certificates** feature in the listview:



Click **Create Self-Signed Certificate...** in the **Actions** pane.

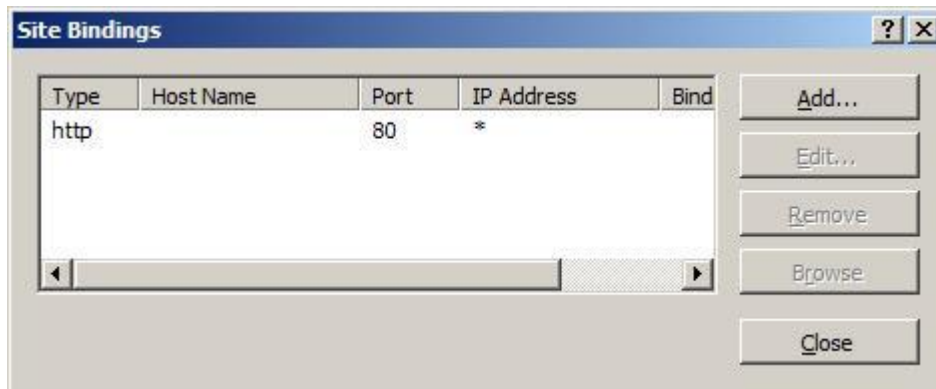


Enter a friendly name for the new certificate and click **OK**.

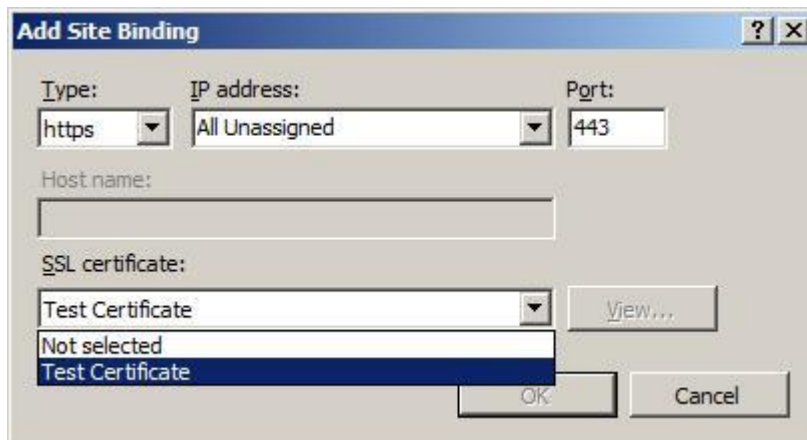
Now you have a self-signed certificate. The certificate is marked for "Server Authentication" use; that is, it uses as a server-side certificate for HTTP SSL encryption and for authenticating the identity of the server.

2.Create an SSL Binding

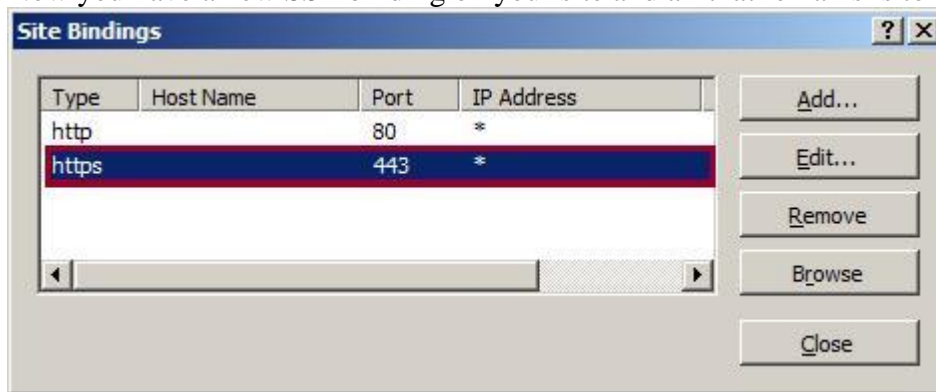
Select a site in the tree view and click **Bindings...** in the **Actions** pane. This brings up the bindings editor that lets you create, edit, and delete bindings for your Web site. Click **Add...** to add your new SSL binding to the site.



The default settings for a new binding are set to HTTP on port 80. Select **https** in the **Type** drop-down list. Select the self-signed certificate you created in the previous section from the **SSL Certificate** drop-down list and then click **OK**.

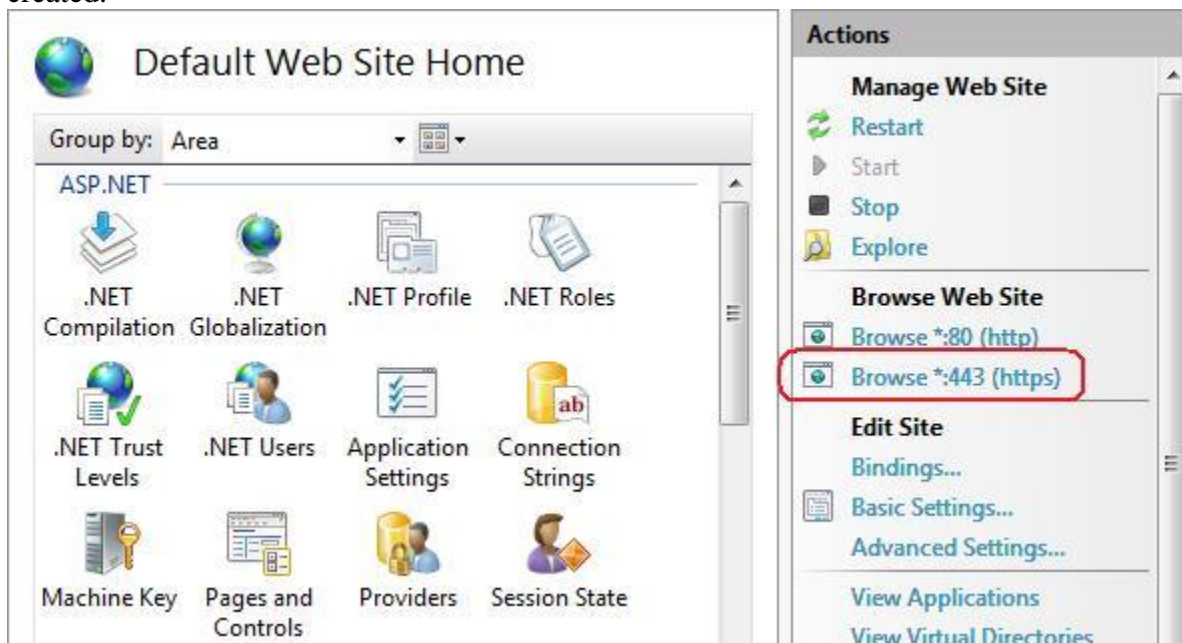


Now you have a new SSL binding on your site and all that remains is to verify that it works.



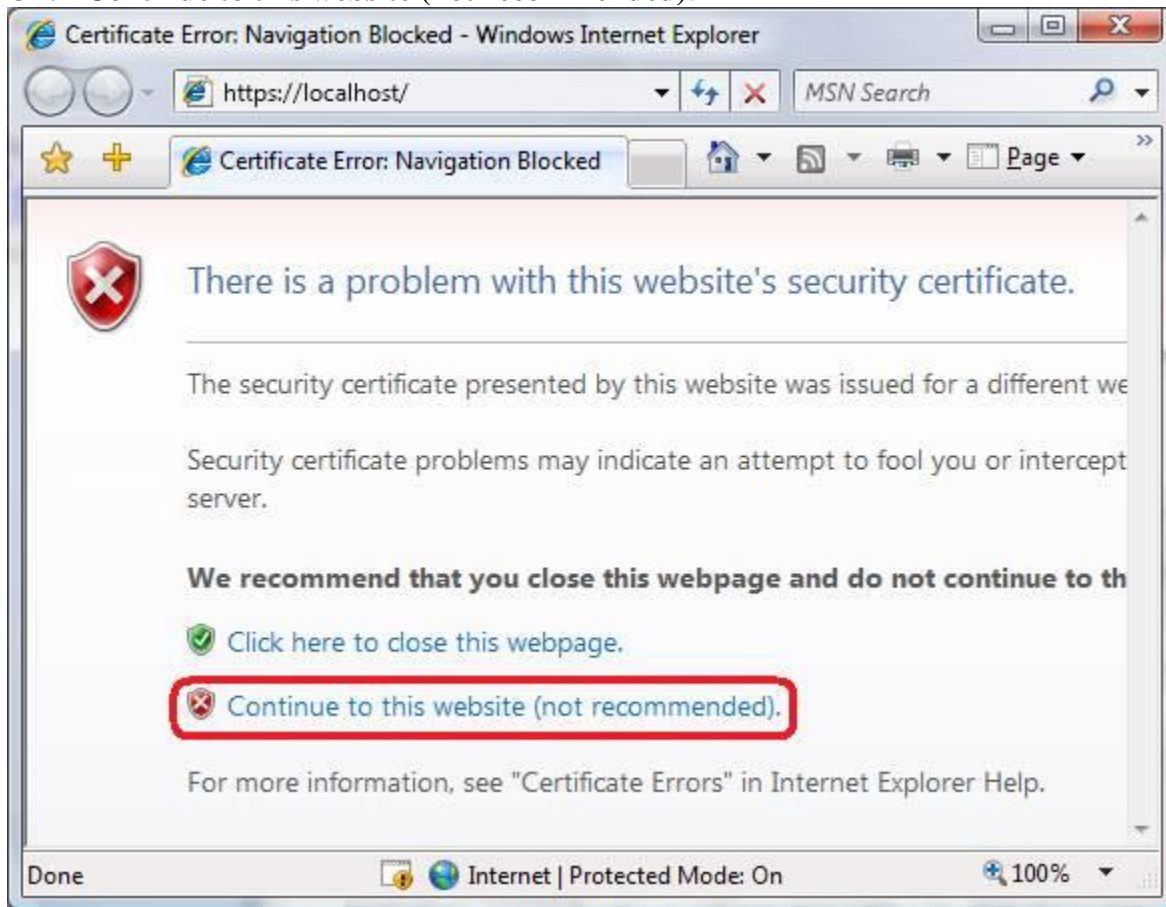
3. Verify the SSL Binding

In the Actions pane, under Browse Web Site, click the link associated with the binding you just created.



Internet Explorer (IE) 7 will display an error page because the self-signed certificate was issued by your computer, not by a trusted Certificate Authority (CA). IE 7 will trust the certificate if you add it to the list of Trusted Root Certification Authorities in the certificates store on the local computer, or in Group Policy for the domain.

Click **Continue to this website (not recommended)**.



4.Configure SSL Settings

Configure SSL settings if you want your site to require SSL, or to interact in a specific way with client certificates. Click the site node in the tree view to go back to the site's home page. Double-click the **SSL Settings** feature in the middle pane.

